



# LaserTrace

SOFTWARE SOLUTION

LASER MARKING MACHINE



UV laser marking  
machine

Complete laser  
integrated  
marking system



### Desktop of ultraviolet laser marking machine

Compared with the infrared laser, this machine adopts the third-order intracavity frequency doubling technology. The focused spot of 355 ultraviolet light is very small, which can greatly reduce the mechanical deformation of materials and has little influence on processing heat. Because it is mainly used for ultra-fine marking and engraving, it is especially suitable for marking food and medical packaging materials, punching micro holes, high-speed dividing of glass materials and complicated graphic cutting of silicon wafers.



### Product characteristics

1. The permanent mark is not easy to be altered for the second time, and it is difficult to prevent counterfeiting and cross-shipment.
2. There is no need for any troubles caused by dust blockage, and the whole machine is maintenance-free
3. No consumables are needed, the service life can reach more than 20,000-30,000 hours, and it can be used repeatedly.
4. Double red light focusing function is adopted, which greatly reduces the operation difficulty of workers.
5. You can edit text, graphics, automatic date, shift, serial number and other information.
6. One machine can be used for two purposes, which can cooperate with the production line for online code spraying or static code spraying.
7. Depth marking: high-speed scanning vibrating mirror can whiten, blacken and deepen the workpiece.

Length 650 \* width 1000 \* height 1420 mm Weight: 75KG

### technical parameter

### Print sample

Laser power:	3W/5W/10W/
Laser wavelength:	355nm
Beam quality:	< 2 (M2)
Laser type:	Pulsed or continuous
service life:	Laser operation > 20,000 hours
cooling system:	water-cooling
Power supply:	Power supply: 220V 50HZ AC power consumption: 700W.
operational environment:	temperature: -20°C—45°C, relative humidity80%;
outline dimension:	650 mm X 1000 mm X 1420 mm
Overall weight:	一体机柜 <75kg
Marking depth:	≤0.5mm Depending on the material
Marking line speed:	≤7000mm/s
Marking range:	Standard plane110X110 Customizable150X150、300X300 mm
Minimum character:	0.15mm
Minimum line width:	0.012mm
repeatability:	±0.002
Print content:	Numbers, men, English letters, patterns, two-dimensional codes, bar codes, etc.





## Endless possibilities

- Straight line, diagonal line and arc marking
- font library, to maximize the output.
- Marking preview
- Multi-frequency, which can make the workpiece white and black.
- adjustable power.

+ 多语言界面

DataMatrix™,  
条形码,  
QR码,

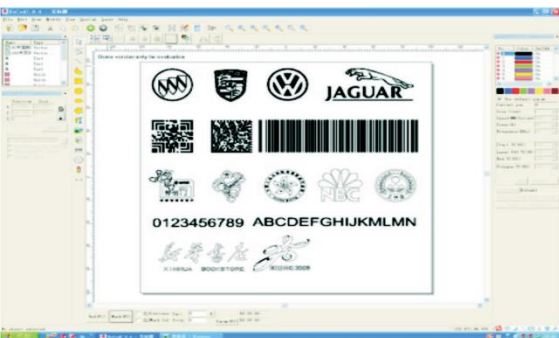
文本, 序列号, 变量, 班次, 日期, UID, logo...

+ 打标参数的直接访问



+

打标预设库,  
背景图案,  
连接数据库 ( ODBC , Excel , ASCII... )



Red light preview can display the printed content on the workpiece in advance through the red light preview function.

- Manage your marking process, from the workshop to the automated production line.

- Allows you to easily complete multiple tasks: repeated inspection, historical files, administrator login to obtain data from existing systems or code reading guns ...

## - Internal software

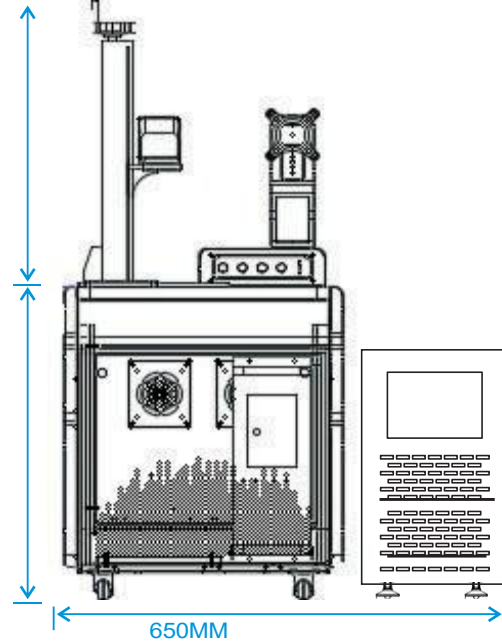
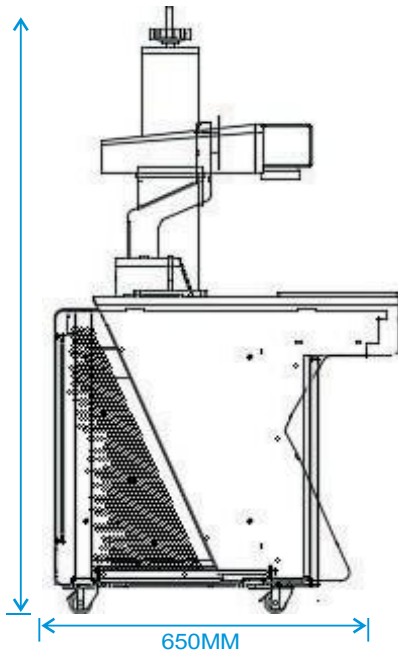
- Support PLT, PCX, DXF, BMP and other files, SHX, TTF fonts.

- Software Extensible Flight Marking

- Automatic serial number, date and time can be set according to production needs.

- Open multilingual, which can easily support languages of all countries in the world.

- Powerful filling function, supporting circular filling.



Taizhou Oukelai Technologies Co., Ltd  
Address: 33rd floor, 8 Ngan Tai City, Jiaojiang, Taizhou  
Tel:400-180-7989  
Web:www.ocaje.cn  
Switchboard:0576-89603488



Contact us